

SPRING | SUMMER

APRIL 2024 • SEPTEMBER 2024

52° North

Travel, Leisure, & Recreation Guide
International Travel | Group & Guided Tours
Hotels | Holiday Packages



Distributed by the RAF Lakenheath
Force Support Squadron



**AUTO
INSURANCE**

USAA knows these roads too.

USAA Auto Insurance can help protect you while driving abroad with policies and coverage you can trust. It even goes with you on leave to insurable locations.

And with offices across Europe, we're always here to help.



**If you know, you know.
If you don't, we do.**

**Get Started
0800-289-192**

Membership eligibility and product restrictions apply and are subject to change. Property and casualty insurance provided by United Services Automobile Association (USAA), USAA Casualty Insurance Company and USAA General Indemnity Company which are domiciled in Texas and are licensed in all 50 United States and D.C.; Guam, Puerto Rico, and/or the Virgin Islands; USAA S.A. UK Branch, authorized by the Prudential Regulation Authority, and regulated by the Financial Conduct Authority and the Prudential Regulation Authority to write coverage in the United Kingdom. USAA S.A. UK Branch Registration Number: England BRO23811, also registered with the Registre du Commerce et des Sociétés of Luxembourg; or USAA S.A., authorized by the Luxembourg Minister of Finance and supervised by Commissariat aux Assurances to write insurance under the Freedom of Services Directive in Azores, Belgium, France, Germany, Greece, Italy, Netherlands, Portugal and Spain. USAA S.A. Trade and Companies Registration Number: B-224622. Not all products are available to all applicants in all locations. Product availability may vary in some foreign locations due to local laws and restrictions. USAA means United Services Automobile Association and its affiliates. The Department of the Navy does not endorse any company, sponsor or their products or services, MCCS Sponsor. No Federal or DoD endorsement implied. Paid ad. No federal endorsement of advertiser is intended. Neither the Coast Guard nor any other part of the federal government officially endorses any company, sponsor, or their products or services. © 2023 USAA. 293449-0523

Attraction Tickets.....	4 - 5
Travel Calendars.....	6 - 11

Information, Tickets & Travel (ITT)

ITT Terms & Conditions and Information	14 - 15
● Family Days Out.....	16 - 18
● Around Britain.....	20 - 25
● Special Events	26 - 35
● London The Capital.....	36 - 38
● Theatre.....	40
● Sporting Events.....	41 - 43
● Adults Only.....	44

Outdoor Recreation (ODR)

ODR Terms & Conditions and Information	46 - 47
● Hike of the Month.....	48 - 49
● Day Trips.....	50 - 55
● Private Hire & Rentals	52
● Overnight Excursions	56 - 57
● ODR Parties.....	58

48th Force Support Squadron

48 FSS Commander

Maj Andrew Zimmer

48 FSS Deputy

John Anderson

Marketing Director

Callie Kennington

Visual Information

Specialists:

- Sarah Olszak
- Devon Garner
- Matt Valverde
- Casey Gottzmann

Commercial Sponsorship:

- Kimberley Porath-Oxley

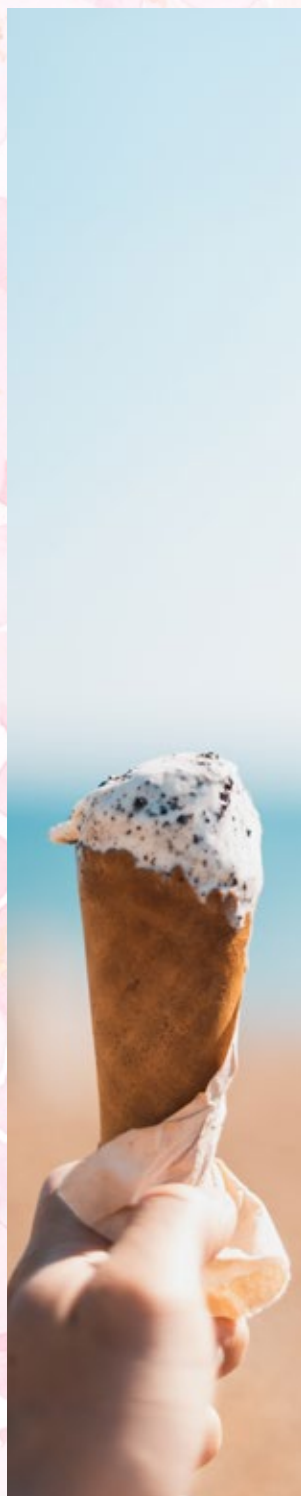
52° North is a biannual guide prepared by the 48th Force Support Squadron's Marketing Department and is an unofficial publication for the RAF Lakenheath community. For advertising or sponsorship inquiries: call 01638 521719, mail 48 FSS/FSK Attn: Marketing & Publicity Unit 5187 APO, AE 09461-5187, or email 48fssmarketing@gmail.com

Contents are not necessarily the official views of, nor endorsed by, the U.S. government, the Department of Defense, the U.S. European Command, the 48th Fighter Wing, or the 48th Force Support Squadron. Information is current at the time of publication. Activities, prices, and events are subject to change.

Contact for Bookings

Information, Tickets & Travel • 01638 52 2979 | DSN: 226-2979

Outdoor Recreation • 01638 52 2146 | DSN: 226-2146



ATTRACTION & THEME PARK TICKETS



WITH FORCE SUPPORT HODGKINSON
**Information
Tickets
& Travel**

London Tube Tickets

Zones 1-6, Off-peak Travel Card

Adult	£13.10
Child (Ages 11-15)	£6.50
Ticket valid Mon-Fri after 9:30am, weekends, & UK holidays	

Big Bus Tour London

Adult	£30
Child (Ages 5-15)	£17
Family (2 Adults & 2 Children)	£77

Big Bus Tour Paris

Adult	£30
Child (Ages 5-15)	£17

Tower of London

Adult	£31
Child (Ages 5-15)	£15.50
Over 65	£24

Kensington Palace

Adult	£22
Child (Ages 5-15)	£11
Over 65	£17.50

Hampton Court Palace

Adult Peak	£27
Adult Off-peak	£24.50
Child Peak (Ages 5-15)	£14
Child Off-peak (Ages 5-15)	£12
Over 65 Peak	£22
Over 65 Off-peak	£19.50

Cineworld Tickets

Adult	£9
Child (Ages 14 and under)	£6
Medium popcorn and soda combo vouchers	£7.50
Cineworld Unlimited Card	£176



Contact ITT for more details & purchasing tickets for:

- London Eye
- London Dungeon
- London Aquarium
- Madame Tussauds™ featuring: Star Wars & Marvel Super Heroes Experiences
- Shrek's Adventure London
- Warwick Castle
- LEGOLAND®
- Thorpe Park
- Chessington World of Adventures
- Alton Towers

Stop by ITT to purchase your discounted attraction tickets today!

Fees & Charges

Theatre Booking*	£2
Airline Ticket*	\$25
Leisure Travel*	£15/\$10

*Price per ticket, booking, or coach.

All tickets are subject to change without notice. All ticket sales are FINAL, non-refundable, and non-exchangeable - no exceptions. Prices effective April 1, 2024.



@RAFLakenheathITT



@RAFLakenheathITT

WALT DISNEY World®

📍 Orlando, Florida

Walt Disney World® tickets
are now available to purchase
from RAF Lakenheath ITT.
Contact us today for
information and pricing!

"Adventure is out there!"

- Charles Muntz, Up



April 2024

SUN

MON

TUE

WED

THU

FRI

SAT

	01 <i>Easter Monday</i>	02	03	04	05	06 City of Bath page 24 Rage Room: Norwich page 53
07 Oxford DYO page 25	08	09	10	11	12	13 Hedingham Castle page 23 London DYO page 36 London Eye London Dungeon Shrek's Adventure SEALIFE Aquarium page 37
14 The Making of Harry Potter page 18	15	16	17	18	19	20 Stratford-upon-Avon: Shakespeare's Birthday page 26 Sherwood Forest Hike page 48
21 London Marathon page 26 London DYO page 36	22	23	24 Archery & Axe Throwing page 58	25	26	27 Windsor Castle page 23
28 Arundel Castle page 22 Go Ape page 53	29	30				

May 2024

SUN

MON

TUE

WED

THU

FRI

SAT

			01	02	03	04 Blenheim Palace & Jousting page 28 Seven Sisters Hike page 51
05 <i>Cinco de Mayo</i> LEGOLAND® page 16 Dover Castle page 20	06	07	08	09	10	11 Lincoln DY0 page 24 Giffords Hall Vineyard page 44
12 <i>Mother's Day (USA)</i> Tower of London page 35 London DY0 page 36 Horseback Trek page 50	13	14	15	16	17	18 <i>Armed Forces Day</i> Stonehenge & City of Bath page 21 Virginia Water Loop Hike page 48
19 Chessington World of Adventures page 16	20	21	22	23	24 <i>Family Day</i> Normandy, France 4-day page 30 Cambridge Beer Festival page 44	25 MCM Comic Con London page 26 London DY0 page 36
26 Blenheim Palace & Food Festival page 28	27 <i>Memorial Day</i> The Making of Harry Potter page 18 Book of Mormon page 40	28	29	30	31	

June 2024

SUN

MON

TUE

WED

THU

FRI

SAT

						01 Bolsover Castle & Sherwood Forest page 20 Thorpe Park page 16 <i>E-bike Vineyard Tour</i> page 51
02 Stratford-upon-Avon & Kenilworth Castle page 20 London DYO page 36	03	04	05	06	07	08 Port Lympne Safari Park page 17 MLB: London Series page 42 <i>Kayaking</i> page 55
09 Cadbury World page 16 MLB: London Series page 42	10	11	12	13	14 <i>Flag Day</i>	15 Trooping the Colour page 34 London DYO page 36
16 <i>Father's Day</i> Tower of London page 35 London DYO page 36 <i>North Sea Fishing</i> page 55	17	18	19 <i>Juneteenth</i> Warwick Castle page 22	20	21 <i>Stonehenge Summer Solstice Hike</i> page 48	22 The Making of Harry Potter page 18 Jack the Ripper & Late Night London page 44
23 Blenheim Palace & Flower Show page 28	24	25	26	27	28	29 Windsor Castle page 23 <i>Rage Room: Norwich</i> page 53
30 Brighton DYO page 25						

July 2024

SUN MON TUE WED THU FRI SAT

	01	02	03	04 <i>Independence Day</i> Chessington World of Adventures page 16 <i>Surfing in Cornwall 3-day</i> page 56	05 <i>Family Day</i> The Making of Harry Potter page 18	06 Stonehenge Inner Circle & Windsor page 21 London DYO page 36 London Eye London Dungeon Shrek's Adventure SEALIFE Aquarium page 37
07 Hampton Court Palace page 22	08	09	10	11 Ladies Day Racing: Newmarket page 34	12	13 London DYO page 36 Buckingham Palace page 38 Wimbledon 2-day page 43 <i>King's Woods Hike</i> page 49
14 Dover Castle page 20	15	16	17	18	19	20 Stonehenge & City of Bath page 21 City of York page 24
21	22	23	24	25	26	27 London DYO page 36 Buckingham Palace page 38 <i>The Long Mynd in Shropshire Hike</i> page 51
28 Arundel Castle page 22	29	30	31 <i>Inflatable Party</i> page 58			

August 2024

SUN MON TUE WED THU FRI SAT

				01	02	03 Brighton DYO page 25 Paddle & Pub page 55
04 London DYO page 36 Buckingham Palace page 38	05	06	07 National Space Center Leicester page 18 Laser Tag page 58	08	09	10 Alton Towers page 17 London Beer Festival page 44
11 Cadbury World page 16 Climb the O2 page 53	12	13	14	15 LEGOLAND® page 16	16	17 London DYO page 36 Buckingham Palace page 38 Herefordshire Beacon Hike page 49
18 London Zoo page 17	19	20	21	22	23 Bury St. Edmunds Beer Festival page 44	24 City of Bath page 24
25 Hedingham Castle page 23 Notting Hill Carnival: London page 26 London DYO page 36	26	27	28	29	30 <i>Family Day</i> The Making of Harry Potter page 18	31 London DYO page 36 Buckingham Palace page 38

September 2024

SUN

MON

TUE

WED

THU

FRI

SAT

01 Dover Castle page 20	02 <i>Labor Day</i> Highclere Castle page 24	03	04	05	06	07 Birmingham DY0 page 25 <i>E-bike Vineyard Tour</i> page 51
08 London DY0 page 36 Buckingham Palace page 38	09	10	11	12	13 Mini Travel Fair page 12	14 Liverpool DY0 page 25 Jack the Ripper & Late Night London page 44
15 Warwick Castle page 22 Oxford DY0 page 25 <i>Go Ape</i> page 53	16	17	18	19	20	21 Stonehenge & City of Bath page 21 London DY0 page 36 <i>One Tree Hill Hike</i> page 49
22 The Making of Harry Potter page 18	23	24	25	26	27	28 City of York page 24 City of York: Food Festival page 29 <i>Caving</i> page 50
29 London DY0 page 36 Buckingham Palace page 38	30					



Friday • September 13 | 10am - 1pm

RAFL BX | FREE

Come have fun and plan your next adventure while entering for your chance to win great prizes!



10% Off

**DATE
NITE**
Discount

Every 1st & 3rd Friday
when purchasing 2 or more tickets.

ITT offers
discounted
rates!

Adult	£9	✓
Child	£6	✓
Medium popcorn and soda combo voucher	£7.50	✓

Cineworld Unlimited Card
only £176!

★cineworld

★cineworld

June & July only

**REPORT CARD
SPECIAL**

Free Child Ticket



Ages 5 - 14 school
children: bring
report card into ITT
showing that you've
received an "A" in
math or English and
we'll reward you
with a FREE child
Cineworld ticket.

Sunfun International

SPRING AND SUMMER SPECIALS 2024

CALENDAR

APRIL

- Fri 5** Cardiff & the Gower Peninsular 3 Day
Sat 13 Historic Belgian Flea Market & Antiques 3 Day
Sat 20 Brussels Extended Day
Fri 26 Edinburgh 3 Day (Whisky Tasting Option)

MAY

- Sat 4** Brugge Extended Day
Fri 10 Glasgow & Loch Lomond 3 Day
Fri 17 Amsterdam 3 day (Efteling Theme Park Option)
Fri 24 Paris 3 Day (Disneyland Option)

JUNE

- Sat 1** Brugge Extended Day
Fri 7 Royal Reims & Champagne 3 Day
Sat 15 Brussels Extended Day
Wed 19 Loch Ness & the Harry Potter Viaduct 4 Day
Fri 28 Lancaster Castle, Market & Antiques 3 Day

JULY

- Fri 5** Paris 3 Day (Disneyland Option)
Sat 13 Brugge Extended Day
Fri 19 Castles of the Rhine Valley 4 Day
Fri 26 Beautiful Bournemouth & Poole 3 Day

AUGUST

- Sat 3** Brussels Extended Day
Fri 9 Castles of Snowdonia 3 Day
Fri 16 Paris 3 Day (Disneyland Option)
Sat 24 Edinburgh Festival Extended Day
Sat 31 Amsterdam 3 day (Efteling Theme Park Option)

SEPTEMBER

- Sat 7** Brugge Extended Day
Fri 13 Royal Reims & Champagne 3 Day
Sat 14 Lille Braderie Flea Market Extended Day
Sat 21 Eastbourne Pier & Seven Sisters Cliff 2 Day
Sat 21 Oktoberfest, Munich 4 Day
Sat 28 Brussels Extended Day

OCTOBER

- Fri 4** Edinburgh 3 Day (Whisky Tasting Option)
Sat 12 Paris 3 Day (Disneyland Option)

NOVEMBER

- Wed 27** Thanksgiving in Switzerland 5 Day



Harry Potter Viaduct



Edinburgh



Disneyland Paris



Oktoberfest



Amsterdam



For more information, dates & destinations visit itlakenheath.com
 or call 01638 523018. Book through RAF Lakenheath IIT

PAID ADVERTISEMENT(S). FEDERAL ENDORSEMENT OF ADVERTISERS NOT INTENDED.



01638 522979 | DSN: 226-2979 • ittlakenheath@gmail.com
www.ittlakenheath.com

Located inside the RAF Lakenheath BX

Monday - Friday • 10am - 5pm | Saturdays & Goal/Family Days • 10am - 1pm | US Holidays • Closed

- Day trips require a 30-person minimum to run. Please book by the Monday prior to the trip unless otherwise stated. Bookings are accepted later if space permits. While every effort will be made to ensure that a tour goes out as scheduled in a 49-passenger coach, ITT reserves the right to substitute the tour with a smaller coach/carrier van if the minimum is not met.
- Trips may be canceled if the minimum of 30 people is not reached. If canceled, the ITT Office will notify customers registered for the trip at least one day prior to departure. The ITT office is NOT responsible if any customer cannot be contacted on their duty phone or home phone provided on the booking form. Customers should contact the ITT office at DSN 226-2979, commercial 01638 52 2979, or via the www.ittlakenheath.com website at least one day prior to departure to check for changes in case ITT had difficulty contacting the patron.
- Day trips use contracted coaches to provide a service for the ITT Office. Prices of these trips include transportation and admission unless otherwise stated. Admission fees that are not included will be paid directly to the admission gate or the tour escort on the day of departure if group discount rates apply. All admissions are payable in pounds sterling.
- Refund Policies: A complete refund (excluding: pre-paid admissions, theatre/concert tickets, and sporting events) will be made under the following circumstances:
 - Unexpected work commitment for military members, verified in writing by their Squadron Commander. The ITT Office must be notified prior to tour departure.
 - Emergency leave. The ITT Office must be notified prior to tour departure.
 - An ITT Office cancellation of a trip.
- Drinking alcoholic beverages and smoking on the coach is strictly prohibited. Food on coaches is not permitted.
- Eligibility: The ITT programs are available to all Active Duty military, DoD civilians, retired military, their dependents, and bona fide guests. Persons must be 18 years of age or over. Children under the age of 18 CANNOT travel without a parent or guardian.
- For pricing purposes, children aged 3-14 years are for transportation only. All others vary depending on the admission ages set by the attraction. All children, including infants, must be in a seat with their seat belts on. All children 5 and under are required a car seat on the coach.
- It is common practice in the UK to tip coach drivers. Gratuities are at the discretion of the passenger and should reflect their level of satisfaction.
- The 52° North Travel Guide is published by the 48th Force Support Squadron Marketing Department. While every effort has been made to ensure that the information contained in the Travel Guide is correct at the time of printing, changes in opening hours, admission charges, etc. may occur. ITT is unable to accept any responsibility for inaccuracies in the information supplied, nor for any inconvenience that may arise.
- Payment Accepted: ITT accepts VISA, American Express, and MasterCard. Sorry, ITT cannot accept cash or cheques. ITT Day Tours can be purchased in the office or on www.ittlakenheath.com. Layaway plans are also available on certain tours. Please ask for details.

ITT strives to give you as much information as possible at the time of booking to prepare you for your trip with us. However, it is always a good idea to look online at the destination/attraction you will be visiting for useful information to better enhance your visit. Please be advised: ITT cannot be held responsible for unforeseen changes in the weather, and it is recommended to always bring an umbrella or waterproof outerwear and shoes.



DID YOU KNOW?

You can make easy payment plans when booking cruises, continental tours, or any of our organized overnight group tours.

Visit or call ITT for details!

SEE WHAT ITT CAN DO FOR YOU!

- Reserve escorted coaches or flight packages
- Arrange a cruise over Thanksgiving
- Purchase attraction tickets for numerous European destinations
- Reserve West End theatre tickets
- Buy British football tickets
- Purchase discounted Cineworld tickets



Follow us on social media for exclusive access to last minute deals & offers!



@RAFLakenheathITT



@RAFLakenheathITT

52° North



THORPE PARK

Saturday • June 1

Check with ITT for more details!

Includes: transportation and Thorpe Park entry

Thorpe Park Resort is the ultimate destination for thrill seekers, featuring some of the UK's most popular roller coasters and amusement rides. Reach new heights with Stealth, the UK's fastest roller coaster, take flight with The Swarm, or face one of Jigsaw's most twisted traps with Saw - The Ride, the world's first horror-themed roller coaster. Lastly, check out Ghost Train, one of the UK's longest ride experiences.



CADBURY WORLD

Sundays • June 9 & August 11

Adult £51 | Child (4-15) £45 | Infant £20

Includes: transportation and Cadbury World entry

A wonderful experience of sights, sounds, and - most importantly - taste! It's the perfect day for all the chocolate lovers out there. Watch as chocolate is produced by hand. You'll also get a chance to buy your own candies at the end.



LEGOLAND®

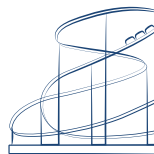
Sunday • May 5

Thursday • August 15

Check with ITT for more details!

Includes: transportation and LEGOLAND® entry

At the LEGOLAND® Windsor Resort, there are over 55 rides and attractions where you can fly through the treetops to escape fearsome dragons, ride the thrilling rapids with a Viking fleet, join LEGO® divers on a magical underwater adventure on the Atlantis Submarine Voyage, or explore LEGO® MYTHICA, a parallel universe to ours where LEGO® creatures come to life.



CHESSINGTON WORLD OF ADVENTURES

Sunday • May 19

Thursday • July 4 (Independence Day)

Check with ITT for more details!

Includes: transportation and CWOA entry

Answer the call of the wild at Chessington World of Adventures Resort. With over 40 rides and attractions like the zoo and SEA LIFE Center, there's something for the whole family. During your visit, don't forget to stop by the world's first Jumanji-themed land!



PORT LYMPNE SAFARI PARK

Saturday • June 8

Adult £74 | Child (3-15) £72 | Infant £20

Includes: transportation and Port Lympne entry & safari experience

Go to Kent's largest wild animal park for an unforgettable day. They are home to over 900 rare and endangered animals, including the largest herd of black rhino in the UK, big cats, and primates.



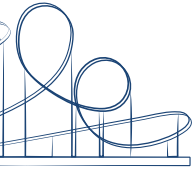
ALTON TOWERS

Saturday • August 10

Check with ITT for more details!

Includes: transportation and Alton Towers entry

From play areas for small children to white knuckle rides for the thrill seekers, Alton Towers has over 40 rides and attractions to enjoy! New in 2024 is Nemesis Reborn, a fearsome ride that takes you on a hair-raising journey through a post-apocalyptic landscape known as Forbidden Valley.



LONDON ZOO

Sunday • August 18

Adult £67 | Child (3-15) £57 | Infant £20

Includes: transportation and London Zoo entry

With over 800 spectacular animal species to discover, as well as live shows and fantastic, immersive exhibits, this is a must-see attraction. Enjoy interactive experiences including Penguin Beach, Gorilla Kingdom, and Rainforest Life.



THE MAKING OF HARRY POTTER WARNER BROS STUDIO TOUR LONDON

Sundays • April 14 & September 22

Monday • May 27 (*Memorial Day*)

Saturday • June 22

Fridays • July 5 & August 30 (*Family Days*)

Adult £85 | Child (5-15) £73 | Infant £20

**Includes: transportation and Harry Potter
Studio entry**

Journey behind the scenes to see first-hand how this film series became one of the most popular, highest-grossing franchises in the world and history. See costumes, animatronics, drawings, and props up-close as you walk through the production warehouses where filming occurred. Walk along Diagon Alley and see Madam Malkin's Robes for All Occasions, Weasleys' Wizard Wheezes, and Ollivanders. Also visit where it all began, Number Four Privet Drive, while sipping a freshly poured Butterbeer!



MAGIC
a waits



NATIONAL SPACE CENTER LEICESTER

Wednesday • August 7

Adult/Child £46 | 4 & under £20

**Includes: transportation and National Space
Center entry**

With six interactive galleries, the UK's largest planetarium, and the iconic 42m high Rocket Tower, this award-winning National Space Center is an out-of-this-world experience. Enjoy a day visiting the Space Center, which is crammed full of space suits, rockets, and meteorites.



SULGRAVE MANOR & GARDEN

GEORGE WASHINGTON'S ANCESTRAL HOME

**BUILT BY THE ANCESTORS OF GEORGE WASHINGTON AND
SAVED FROM RUIN BY DONORS FROM BOTH THE UK AND
USA, SULGRAVE MANOR IS STEEPED IN HISTORY WITH A
LEGACY THAT UNITES NATIONS.**



**BE INSPIRED BY OUR STORIES AND SOAK
UP THE ATMOSPHERE IN OUR TRANQUIL
GARDENS.**

**DISCOVER THE ORIGINS OF THE
WASHINGTON FAMILY WEALTH, HOW
THEY CROSSED THE ATLANTIC WHEN
THEIR FORTUNES FADED AND FIND OUT
ABOUT GEORGE WASHINGTON, THE MAN
BEHIND THE MYTH.**

**2024 SEASON 10TH MARCH TO 31ST OCTOBER
VISIT OUR WEBSITE FOR MORE INFORMATION**

**A: SULGRAVE MANOR, MANOR ROAD, SULGRAVE OX17 2SD
P: 01295 760205 W: WWW.SULGRAVEMANOR.ORG.UK**

PAID ADVERTISEMENT(S). FEDERAL ENDORSEMENT OF ADVERTISERS NOT INTENDED.



DOVER CASTLE

Sundays • May 5, July 14, & September 1

Adult £58 | Child (5-17) £49 | Infant £20

Includes: transportation and Dover Castle entry

Situated above the White Cliffs of Dover, this magnificent castle has guarded the shores from invasion for 10 centuries. Explore the darkly, atmospheric secret wartime tunnels, now with a vivid re-creation of the Dunkirk evacuation, complete with dramatic projections of swooping spitfires and real film footage.

BOLSOVER CASTLE & SHERWOOD FOREST

Saturday • June 1

Adult £60 | Child (5-17) £54 | Infant £20

Includes: transportation, Bolsover Castle entry, and free time to explore Sherwood Forest

With spectacular views over Derbyshire, the fairy-tale Stuart mansion Bolsover Castle was designed to entertain and impress. Its reputation for revelry lives on as we now entertain you and your family. Wander the lavish rooms of the Little Castle, explore the romantic ruined terrace range, and delight in the views from the wall walk, followed by a visit to Sherwood Forest.

STRATFORD-UPON-AVON & KENILWORTH CASTLE

Sunday • June 2

Adult £44 | Child (5-17) £38 | Infant £20

Includes: transportation, Kenilworth Castle entry, and free time in Stratford-upon-Avon

Kenilworth Castle is a sight to be seen. With red sandstone towers, the keep and walls glow brightly in the morning and late evening sun. Learn about its links with Henry V and explore the lovely Tudor gardens. From there, visit the literary capital of England. Enjoy this charming market town where William Shakespeare was born.



🏰 STONEHENGE & CITY OF BATH

Saturdays • May 18, July 20, & September 21
Adult £83 | Child (5-17) £73 | Infant £20*

Includes: transportation, Stonehenge entry, and free time to explore the city of Bath

Visit Britain's most remarkable monument and World Heritage Site. Enjoy the visitor's center, which features permanent and temporary exhibitions, as well as an external exhibition featuring a cluster of Neolithic houses. Visitors may walk the circumference of the stones to discover the many mysteries of this incredible site. From there, we venture to the city of Bath, home to a Roman thermal bathhouse. Here you will have time to explore the city at your leisure.

**English Heritage members: ask ITT about discounted prices*

STONEHENGE INNER CIRCLE & WINDSOR

Saturday • July 6
All £99*

Includes: transportation, Stonehenge Inner Circle entry, and a stop in Windsor

Visit Britain's most intriguing prehistoric monument and World Heritage Site. As old as the great temples and pyramids of Egypt, Stonehenge exerts a mysterious fascination. This rare opportunity allows you to get up close to the stones and includes a stop in Windsor.**

**Does not include Windsor Castle entry*

***Discounted prices will not be offered to English Heritage members on this trip*





ARUNDEL CASTLE

Sundays • April 28 & July 28

Adult £61 | Child (5-16) £45 | Infant £20

Includes: transportation and entry to Arundel Castle & gardens

One of the largest inhabited and complete castles in England, Arundel Castle is situated in magnificent grounds overlooking the River Arun in West Sussex.

This towering, stately home and the fortified castle have been the seat of the Dukes of Norfolk and their ancestors since 1067. The castle boasts a collection of furniture, paintings, clocks, tapestries, armor, and personal possessions of Mary Queen of Scots.



WARWICK CASTLE

Wednesday • June 19 (*Juneteenth*)

Sunday • September 15

Adult/Child £53 | Infant £20

Includes: transportation and Warwick Castle entry

Immerse yourself in more than 1,100 years of jaw-dropping history! Full to the turrets with dazzling shows and attractions, spellbinding storytelling, and fun experiences all year-round, Warwick Castle is an action-packed, unforgettable day out for everyone.



HAMPTON COURT PALACE

Sunday • July 7

Adult £56 | Child (5-15) £43 | Infant £20

Includes: transportation and Hampton Court Palace entry

This prestigious, historic royal home is one of the only two surviving palaces owned by King Henry VIII. At your leisure, learn about the life of the King and the historic events that occurred at the palace. The grounds house the world's largest grapevine, which is over 250 years old, and the UK's oldest surviving, world-famous maze.

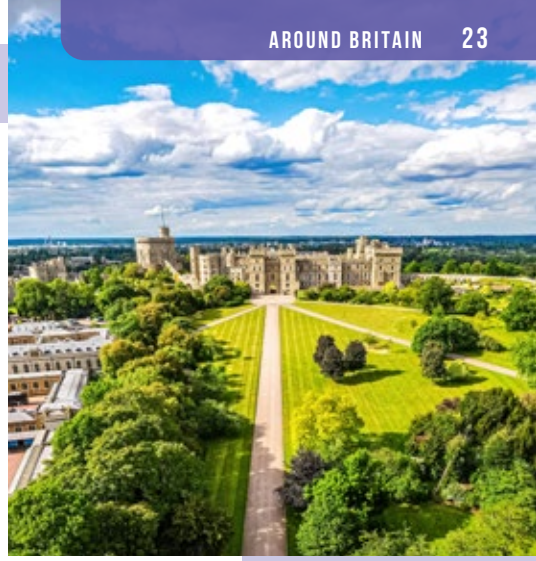
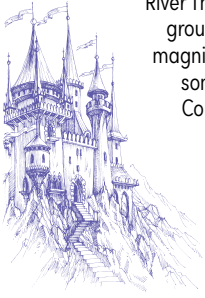
WINDSOR CASTLE

Saturdays • April 27 & June 29

Adult £62 | Child (5-17) £47 | Infant £20

Includes: transportation and Windsor Castle entry

Windsor Castle is an official residence of the King and the largest occupied castle in the world. The site was chosen with great care, high above the River Thames on the edge of the Saxon hunting grounds. Among its many attractions are the magnificent State Apartments - furnished with some of the finest treasures from the Royal Collection, Queen Mary's Dolls' House, and St. George's Chapel.



LEEDS CASTLE & CITY OF CANTERBURY

Sunday • July 21

Adult £49 | Child (3-15) £44 | Infant £20

Includes: transportation, Leeds Castle entry, and free time to explore the city of Canterbury

Picturesquely positioned on the edge of a beautiful moat, Leeds Castle is known as the "loveliest castle in the world."

After spending time at the serene location, enjoy the Canterbury Tales and join Chaucer's pilgrims, admire the Roman mosaic pavement in the Roman Museum, or climb the Westgate Towers for splendid, panoramic views.



HEDINGHAM CASTLE

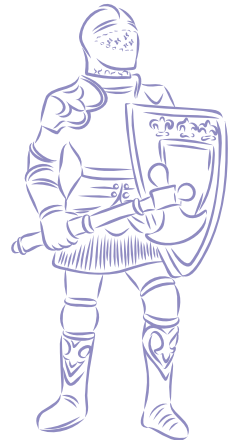
Saturday • April 13

Sunday • August 25

Adult £38 | Child (4-16) £32 | Infant £20

Includes: transportation and entry to the gardens, keep, & jousting events

The castle grounds will be filled with medieval magic as the Knights of Middle England join us to battle in front of the keep. With two jousts to enjoy a day, alongside plenty of fun activities and displays, there is something for everyone. Enjoy a variety of pursuits, including falconry, musicians, archery, and more. This is a fantastic day out for all to enjoy!



Highclere CASTLE

Monday • September 2 (Labor Day)
Adult £64 | Child (4-16) £55 | Infant £20

Includes: transportation and entry to Highclere Castle & gardens

Highclere Castle is not only beautiful architecturally, but a warm and welcoming home. Enjoy exploring the history, gardens, and life behind the scenes of "The Real Downton Abbey." After many seasons of Downton Abbey, fans will automatically recognize the stunning building as the home of the Crawley family. Believe it or not, the inside of the house looks identical to the hit drama, except you sadly won't be greeted by Carson upon arrival.



CITY OF BATH

Saturdays • April 6 & August 24
Adult £40 | Child (3-14) £38 | Infant £20

Includes: transportation only

Enjoy the history of Bath, a UNESCO World Heritage Site. Explore a Roman thermal bathhouse* and learn about Bath's renaissance under royal patronage in the 18th century. There will also be plenty of time to explore the city at your leisure.

**Entry to Roman Baths not included*



LINCOLN DYO

Saturday • May 11
Adult £32 | Child (3-14) £30 | Infant £20

Includes: transportation only

Centered around the beautiful cathedral and castle, the city of Lincoln is full of attractive buildings, including fine 16th century and Georgian properties. You will visit the city center and it will be like stepping back in time. Lincoln was a Roman town rivaling London in importance, and many traces of this time in the city remain - remnants of the old city wall and the 3rd century Newport Arch, which is also believed to be the only Roman arch to still be used by traffic.



CITY OF YORK

Saturdays • July 20 & September 28
Adult £58 | Child (3-14) £56 | Infant £20

Includes: transportation only

Walk along the Roman city walls, the longest city walls in England. Learn about the York Minster and lose yourself in the quirky shops and architecture of the Shambles, the street that is believed to have inspired Diagon Alley. Don't miss the views from Clifford's Tower, and step back in time at the York Castle Museum.





Brighton DYO

Sunday • June 30

Saturday • August 3

Adult £44 | Child (3-14) £42 | Infant £20

Includes: transportation only

Voted one of the top 10 beach break destinations in the world, Brighton and its beachfront are legendary.

Spend the day in this coastal city and enjoy all the local attractions, including the Brighton Pier, Royal Pavilion, British Airways i360 Tower, and much more! Brighton has it all!

BIRMINGHAM DYO

Saturday • September 7

Adult £33 | Child (3-14) £31 | Infant £20

Includes: transportation only

Britain's second largest city, Birmingham, is an industrial hub with a vibrant, creative heart. There's a whole host of quirky adventures waiting to be discovered in the city - from the National SEA LIFE Center Aquarium and the Custard Factory, to a creative hub of many independent shops, cafes, and restaurants, and even the largest Primark in the world.

OXFORD DYO

Sundays • April 7 & September 15

Adult £33 | Child (3-14) £31 | Infant £20

Includes: transportation only

Known as the "City of Dreaming Spires," Oxford is a wonderful place to explore. It is flat and compact with many attractions, such as the University of Oxford and Carfax Tower, where you can climb the 99 steps to experience a bird's eye view of Oxford's "dreaming spires." You can also visit Oxford's Covered Market, which officially opened in 1774 and has a unique and wonderful atmosphere.



LIVERPOOL DYO

Saturday • September 14

Adult £63 | Child (3-14) £61 | Infant £20

Includes: transportation only

Spend a relaxing day in northwest England where the Irish Sea meets with the River Mersey - Liverpool. While in Liverpool, you can explore the hometown of the Beatles and re-create iconic pictures. Don't miss out on the "Three Graces" that include the Cunard Building, Port of Liverpool Building, and Royal Liver Building.



MCM COMIC CON LONDON

Saturday • May 25

Adult/Child £69 | 10 & under £20

Includes: transportation and MCM Comic Con priority ticket

Calling all sci-fi fans, gamers, comic collectors, movie buffs, and anime enthusiasts! MCM Comic Con returns to London this May for more fun-filled celebrations of geeky goodness. Meet special guests from the world of film and TV, voice actors, and more, while exploring the Comic Village packed with artists, writers, and graphic novelists.



STRATFORD-UPON-AVON: SHAKESPEARE'S BIRTHDAY

Saturday • April 20

Adult £30 | Child (3-14) £28 | Infant £20

Includes: transportation only

The streets of Stratford-upon-Avon are taken over with music, pageantry, and a special parade as Shakespeare's birthday weekend brings together performers, artists, and ambassadors from around the world in celebration.



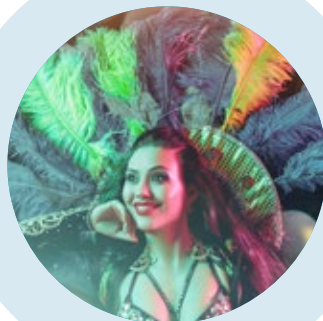
THE LONDON MARATHON

Sunday • April 21

Adult £35 | Child (3-14) £33 | Infant £20

Includes: transportation only

Join us for one of London's biggest events. We will take you into central London, where you can make your way to view the marathon. There will also be time to explore London at your own leisure.



NOTTING HILL CARNIVAL: LONDON

Sunday • August 25

Adult £35 | Child (3-14) £33 | Infant £20

Includes: transportation only

Get ready for the largest street festival in Europe! Be sure to see London's Royal Borough area come alive in the sights, sounds, and tastes of the Caribbean. Listen to steel bands, see extravagant costumes, try authentic jerk chicken, and witness continuous parades.*

**Not recommended for young children*

A man in a military camouflage uniform is kneeling in a hangar, looking off to the side. He is holding a bright light that creates a lens flare effect. In the background, other people in military uniforms are visible, and the tail fin of an aircraft is partially seen.

FOCUS ON THE
PATH AHEAD.
**WE CAN HELP
YOU GET THERE.**

Coaching your financial future
every step of the way.

PLANNING

GOAL SETTING

BUDGETING



FIRSTCOMMAND.COM

Paid Ad. No Federal endorsement of advertiser intended.



BLenheim PALACE *events*



All Blenheim Palace trips include: transportation and entry to the palace, park, and gardens

BLenheim PALACE & JOUSTING

Saturday • May 4

Adult £59 | Child (5-16) £47 | Infant £20

Step back in time to medieval England and join the Blenheim Palace team for an action-packed day of jousting tournaments. Visitors can also enjoy archery & falconry displays.



BLenheim PALACE & FOOD FESTIVAL

Sunday • May 26

Adult £59 | Child (5-16) £47 | Infant £20

A day guaranteed to satisfy your taste buds and indulge your passion for great food and drink. Sample products from artisan bakers, craft brewers, and international cuisine – plus, treat yourself to handmade sweets and ice cream!



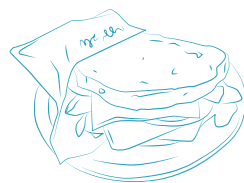
BLenheim PALACE & FLOWER SHOW

Sunday • June 23

Adult £59 | Child (5-16) £47 | Infant £20

The fabulous flower show returns to the grounds of Blenheim Palace in June to showcase the best of British gardening.





CITY OF YORK: FOOD FESTIVAL

Saturday • September 28

Adult £58 | Child (3-14) £56 | Infant £20

Includes: transportation only

The City of York Food Festival returns for 2024! Parliament Street and St Sampson's Square will host the festival market along with various bars and demonstrations. After exploring the festival, you will still have time to walk along the Roman city walls and visit the quirky shops and architecture of the Shambles, the street that is believed to have inspired Diagon Alley.



ROBIN HOOD FESTIVAL

Check with ITT for more details!

Adult £22 | Child (3-14) £20 | Infant £15

Includes: transportation only

The Robin Hood Festival in Sherwood Forest has entertainment for all ages. Various performers will delight you as you explore medieval stalls and jousting tournaments, enjoy storytellers and comedy acts, and witness Robin Hood and the Sheriff of Nottingham clash once more in the home of the outlaw! Explore the forest, encounter the festival's characters, and visit the legendary Major Oak.

EXPERIENCE *Europe*



4-Day

NORMANDY France

May 24 - 27 (Memorial Day Weekend)

£480 per person

Includes: all admission fees, three nights in a three-star hotel, continental breakfast, return luxury coach to Normandy, channel crossing, and an experienced tour manager

Prices are based on two adults sharing a room • £120 single supplement • Layaway option available with a non-refundable, non-exchangeable deposit of £60 per person upon booking • Full payment is due by Thursday, April 25 • Tour not recommended for young children

Pegasus Bridge

Utah Beach

Pointe du Hoc

American Cemetery

Arromanches

The Airborne Museum





5-Day

ICELAND for Thanksgiving

**November 27 - December 1
(Thanksgiving Weekend)**

Check with ITT for more details!

Includes: round-trip airfare, Reykjavik airport transfers, four nights bed & breakfast accommodation at a five-star hotel, Reykjavik city tour, and an experienced tour leader

Pricing will be based on two adults sharing a room • Layaway option available • Full payment is due by Thursday, October 17 • Additional transportation and luggage not included • Travel insurance is highly recommended

Where to?

American Forces Travel is the official leisure travel website for Morale, Welfare and Recreation (MWR).

4 Simple Steps

GET STARTED:

- Visit www.americanforcetravel.com
- Click "Get Started"
- Verify Eligibility
- Start Traveling



American Forces Travel™
supported by **priceline®**

For more details, contact your Tickets and Travel Office or visit

www.americanforcetravel.com

*For Eligible Patrons

8-
Day

THANKSGIVING Cruise

November 27 - December 4

Starting at \$958* per cabin

Includes: cabin, dining, and entertainment

Prices are based on two adults sharing an inside-cabin room • Prices exclude airfare, airport transfers, drink packages, gratuities, and shore excursions • Pricing available for third and fourth person • Payment plans available - contact ITT for further details • Deposit of \$398 is due at time of booking; full payment is due no later than Thursday, August 29

**Taxes and fees included in pricing*

Livorno, Italy

Marseille, France

Palma de Mallorca, Spain

Valencia, Spain

Cagliari, Italy

Civitavecchia, Italy

Livorno Italy

TROOPING THE COLOUR

Saturday • June 15

Adult £35 | Child (3-14) £33 | Infant £20

Includes: transportation only

"Trooping the Colour" is an annual event marking The King's official birthday. This momentous occasion will be marked by a colorful and historic military parade.

This splendid event takes place every year on Horse Guards Parade in Whitehall.

No reserved seating available; standing only



LADIES DAY RACING: NEWMARKET

Thursday • July 11

Adults only £62

Includes: transportation and Grandstand & Paddock Ladies Day ticket

Ladies Day at Newmarket Racecourse is the summer's hottest ticket. Visitors come from near and far in their finest outfits to enjoy this great event! Ladies Day has it all: horse racing, food, drinks, a best dressed lady award, and more. Don't miss out on this one-off, epic day out!

TOWER OF London



TOWER OF LONDON: MOTHER'S DAY

Sunday • May 12 (Mother's Day)*

Adult £65 | Child (5-15) £49 | Infant £20

Includes: transportation and Tower of London entry

Give mom a special treat with a trip to the Tower of London!

As a royal palace, fortress, prison, place of execution, Royal Mint, and jewel house, the Tower has witnessed many great events in British history. Enter its gates and you'll soon see why the Tower is such an important part of London. Admission includes the "Beefeater" tour, access to the White Tower, Medieval Palace, Crown Jewels exhibition, and more.

**Moms receive 50% off this tour when accompanied by a full-paying child. Must be accompanied by a child to receive a discount. This offer cannot be exchanged for another.*



TOWER OF LONDON: FATHER'S DAY

Sunday • June 16 (Father's Day)*

Adult £65 | Child (5-15) £49 | Infant £20

Includes: transportation and Tower of London entry

Give dad a special treat with a trip to the Tower of London!

As a royal palace, fortress, prison, place of execution, Royal Mint, and jewel house, the Tower has witnessed many great events in British history. Enter its gates and you'll soon see why the Tower is such an important part of London. Admission includes the "Beefeater" tour, access to the White Tower, Medieval Palace, Crown Jewels exhibition, and more.

**Dads receive 50% off this tour when accompanied by a full-paying child. Must be accompanied by a child to receive a discount. This offer cannot be exchanged for another.*



London

DYO

Saturdays

- April 13
- May 25
- June 15
- July 6, 13, & 27
- August 17 & 31
- September 21

Sundays

- April 21
- May 12 (*Mother's Day*)
- June 2 & 16 (*Father's Day*)
- July 21
- August 4 & 25
- September 8 & 29

Adult £35 | Child (3-14) £33 | Infant £20

Includes: transportation only

Fancy seeing London and taking in some of the sights?
Then, this is the tour for you.

We'll get you to London where you can explore all there
is to see on your own, then pick you up at the designated
area to get you safely back home. Never been before?

Why not purchase a discounted ticket at ITT for the
Tower of London, Big Bus, London Eye, London Dungeon,
London Shrek's Adventure, or the SEA LIFE Aquarium.



Saturdays • April 13 & July 6

Check with ITT for more details!

Includes: transportation and London Eye entry

At 150 yards, the London Eye is one of the world's tallest observation wheels, providing up to 25 miles of panoramic views on a clear day. Tickets include access to the London Eye 4D Experience and a groundbreaking 3D film with in-theater effects such as wind, mist, and bubbles.



lastminute.com
London Eye



Saturdays • April 13 & July 6

Check with ITT for more details!

Includes: transportation and London Dungeon entry

Are you brave enough to face 90 minutes of London's goriest past? Delve into the ancient capital's bloody history with live actors, thrilling rides, and special effects. There's something for the whole family: Traitors' Gate underground boat ride; Vengeance, the UK's first 5D laser ride; and the ever-popular Drop Dead: Drop Ride.



Saturdays • April 13 & July 6

Check with ITT for more details!

Includes: transportation and Shrek's Adventure entry

A unique and exciting walk-and-ride attraction for the whole family - amazing DreamWorks animation, captivating story-telling, and a good dose of Donkey's cheekiness awaits. Includes: 4D DreamWorks Tours bus, 10 live fairy-tale themed shows, meet and greets with Shrek's dream team, and much more.



Saturdays • April 13 & July 6

Check with ITT for more details!

Includes: transportation and London Aquarium entry

Home to one of Europe's largest collections of global marine life, the aquarium experience takes visitors on an immersive and interactive journey. Stars of the show include green turtles, seahorses, octopi, and the ever-popular duo: the clownfish and the blue tang. There will also be plenty of time to explore London at your own leisure.



Interested in a London City Pass?

Contact ITT for a full listing!

ittlakenheath@gmail.com

BUCKINGHAM

Palace**Saturdays**

- July 13 & 27
- August 17 & 31

Sundays

- August 4
- September 8 & 29

Adult £68 | Child (5-17) £51 | Infant £20

**Includes: transportation and
Buckingham Palace entry**

Buckingham Palace serves as both the office and London residence of His Majesty the King and is one of the few working royal palaces remaining in the world today. During some of the summer months, when the palace is not being used in its official capacity, visitors can enjoy the 19 magnificent State Rooms furnished with many of the greatest treasures.

TAKE FLIGHT

with

Keesler Federal

*Helping members
live extraordinary*

Maximize your earnings
with free rewards checking,
certificates and high-interest
money market accounts.

RAF Alconbury | RAF Lakenheath | RAF Mildenhall

1-800-445-5555 | 01638-533268

keesler.com

KeeslerFederal 
CREDIT UNION

PAID ADVERTISEMENT(S). FEDERAL ENDORSEMENT OF ADVERTISERS NOT INTENDED.



STAY AT HILTON CAMBRIDGE CITY CENTRE AND EXPLORE CAMBRIDGE

Experience the perfect weekend break. Enjoy our breakfast buffet, dinner in Bull & Bass restaurant, a drink in our Piano Bar, on-site parking, WiFi, pet friendly rooms and a gym. Upgrade your room to enjoy access to our Executive Lounge.

NEARBY:

- Punting Tours
- Nightlife
- City Sightseeing Bus Tour
- American War Memorial
- Shopping
- Museum
- Botanic Garden
- Walking Tours

HILTON CAMBRIDGE CITY CENTRE

20 Downing St, Cambridge CB2 3DT | +44 (0) 1223 464491
hilton.com/cambridgecitycentre | stnhc_salesadm@hilton.com


Hilton
CAMBRIDGE CITY CENTRE

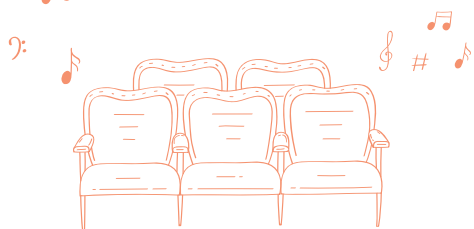
THE BOOK OF MORMON

Monday • May 27 (Memorial Day)
All £92

Includes: transportation and theatre ticket

The biggest, boldest, funniest musical in the land!

Two young Mormon missionaries are sent to a remote village in northern Uganda. Naive and optimistic, the two missionaries try to share the Book of Mormon but have trouble connecting with the locals who are more worried about war, famine, poverty, and AIDS than religion.



Mrs. Doubtfire

The New Comedy Musical

Check with ITT for more details!
All £98

Includes: transportation and theatre ticket

Lovingly based on the hit film, poppets! Out-of-work Daniel will do anything for his kids. After losing custody in a messy divorce, he creates the alter ego of Scottish nanny Euphemia Doubtfire in a desperate attempt to stay in their lives. As his new character takes on a life of its own, Mrs. Doubtfire teaches Daniel more than he bargained for about how to be a father.



INTERESTED IN ATTENDING A
FOOTBALL
GAME?



GET TICKETS TODAY
FROM ITT!

1. **PICK** OUT YOUR GAME
2. EMAIL: **ITTLAKENHEATH@GMAIL.COM**
3. **GOOOOAL**



SCAN
HERE TO
INQUIRE

MAJOR LEAGUE BASEBALL



LONDON SERIES²⁴

SATURDAY, JUNE 8

SUNDAY, JUNE 9



VS



TICKET ONLY
CATEGORY 4
£135*

TICKET + TRANSPORTATION
CATEGORY 4
£168*

.....
TRANSPORTATION ONLY £37*

*ALL PRICES ARE PER DAY.
.....

Interested in attending both games?
CONTACT ITT FOR MORE INFORMATION!



LONDON NFL GAMES

Coming soon!

Check with ITT for prices



2-DAY TENNIS WIMBLEDON CHAMPIONSHIP

July 13 - 14

£395* per person | Deadline to book: Friday, April 5

Includes:

- Luxury coach travel for the entire trip
- One-night bed & breakfast accommodation
- One full day at Wimbledon with a reserved seat on No.1 Court on July 14
- Tour manager

**£70 single supplement • £200 non-refundable, non-exchangeable deposit is required at the time of booking • Full payment is due by Friday, April 5*





GIFFORDS HALL VINEYARD

Saturday • May 11
Adults only £49

Includes: transportation, vineyard tour, and tasting

Enjoy a day out at Giffords Hall Vineyard. On arrival, you will receive tea and coffee, followed by a private tour of the vineyard with an expert speaker who will enlighten you on the history of the vineyard, viticulture practices, their grape varieties, and what they achieve with them. Finish this eventful day by sampling three wines.



CAMBRIDGE BEER FESTIVAL

Friday • May 24
Adults only £18

Includes: transportation only

LONDON BEER FESTIVAL

Saturday • August 10
Adults only £35

Includes: transportation only

BURY ST. EDMUNDS BEER FESTIVAL

Friday • August 23
Adults only £15

Includes: transportation only



JACK THE RIPPER & LATE NIGHT LONDON

Saturdays • June 22 & September 14
Adults only £55

Includes: transportation, a two-hour Jack the Ripper walking tour, and free time to explore London

Follow Jack the Ripper's bloodstained trail of horror down the crooked, cobbled alleyways of Whitechapel. Then, head off to Leicester Square, where you will have free time to enjoy a meal and explore at your leisure.





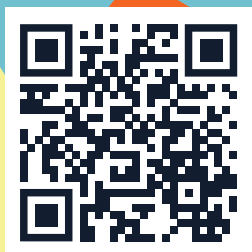
Pet PCSing with TailWings



www.tailwingspettravel.com



SCAN ME



+44 (0) 203 778 1190 | woof@tailwingspettravel.com

Paid Ad. No Federal endorsement of advertiser intended.



01638 522146 | DSN 226-2146 • odrtrips@gmail.com

www.lakenheathfss.com/outdoor-recreation

BLDG 1109

October 1 – March 31*

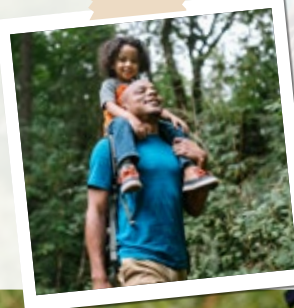
Monday – Friday • 10am – 5pm | Saturday, Sunday, & Federal Holidays • Closed | Family & Goal Days • 10am – 1pm

April 1 – September 30*

Monday – Friday • 10am – 5pm | Saturday, Family & Goal Days • 10am – 1pm | Sunday & Federal Holidays • Closed

**Times are subject to change. Please see lakenheathfss.com for updates.*

1. Registration: All trips require a minimum number of participants and have a registration date deadline; if the minimum number is not met the trip may be canceled. Trip registration requires full payment, unless stated otherwise. Registration can be done in person at ODR (Bldg 1109) or on our website (listed above). ODR accepts VISA, American Express, and MasterCard. Sorry, ODR cannot accept cash or cheques.
2. Eligibility: Active duty, DoD civilians, retirees, dependents, DoDDS, and escorted guests are eligible. Participants must be 18 years or older unless accompanied by their parent or authorized guardian. Car seats must be provided by the patron. Age restrictions may limit participation based upon the nature of the activity.
3. Cancellations & Refunds: ODR will notify participants of cancellations and a full refund will be given for trips canceled by ODR. ODR is not responsible if patrons cannot be contacted with the details provided at registration. A complete refund (excluding prepaid admissions and overnight tours) will be made under the following circumstances:
 - a. Unexpected work commitment for military members verified in writing by their Squadron Commander. The ODR Office must be notified prior to tour departure.
 - b. Emergency Leave. The ODR Office must be notified prior to tour departure.
 - c. An ODR office cancellation of a trip.
4. Itinerary: Times of departure are firm. Refunds will not be given for late arrivals or missed departures AT ANY point during the trip. Return times are tentative based upon estimates, but may be flexible based upon traffic or weather. The trip leader may make changes to the trip if deemed necessary for safety or in the best interest of the group as a whole.
5. Trip fees cover only the costs and items listed in the includes section throughout the brochure. The patron will be responsible for any other expenses which may include: food, hire of equipment, admission fees, or any optional additional activities.
6. Food and Drink: Drinking alcoholic beverages and smoking on the coaches is strictly prohibited. Eating food on the coaches is not permitted.
7. This is a guide only. Please contact ODR with any specific questions or concerns.
8. Our trips have a pre-trip briefing. This will be emailed or conducted in-person (mandatory if scheduled) to provide a checklist of things for you to bring and what Outdoor Recreation will provide.
9. Deadlines are used to make decisions about canceling trips due to lack of participation. ODR will still accept sign-ups until the trip is full if the trip is not canceled.
10. We also offer private customized trips, tours, and activities for groups, families, and squadrons. Please ask for a quote based on your itinerary and/or our suggestions.



EXERTION LEVELS EXPLAINED

Most trips are given an exertion rating to help you plan your participation level with that activity. Some trips are designed so you can choose to participate at various levels of exertion.

RAF Lakenheath Outdoor Recreation encourages and supports the participation of all individuals in our programs, including individuals with disabilities. We provide assistance and support to all participants as needed when possible.

If you require assistance or an accommodation, please contact ODR for more information.

- **Low:** Appropriate for most fitness levels
- **Moderate:** Will require ability to manoeuvre over rough or uneven terrain or require activity for several hours
- **High:** Participant should be fit with no current injuries in order to participate



Follow us on social media for exclusive access to last minute deals & offers!



@RAFLakenheathOutdoorRecreation



@RAFLakenheathODR

52° North



ADVENTURE

awaits!



APR

SHERWOOD FOREST

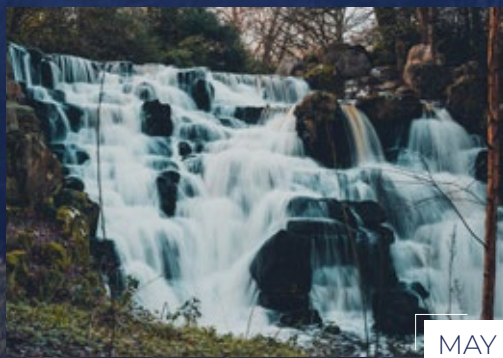
Saturday • April 20

Ages 10+ | All £47

Exertion level: MODERATE

Featuring:

- Exploration of the legendary Sherwood Forest
- A visit to the Major Oak tree where Robin Hood and his men dwelled



MAY

VIRGINIA WATER LOOP

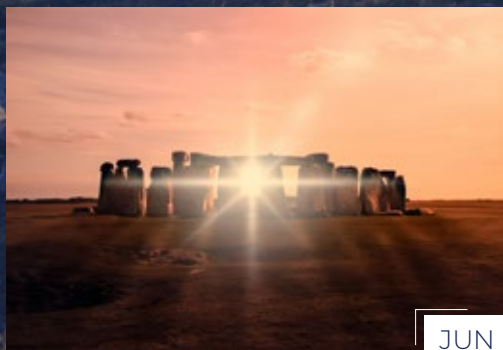
Saturday • May 18 (Armed Forces Day)

Ages 10+ | All £40

Exertion level: MODERATE

Featuring:

- A scenic walk around the man-made Virginia lake, built in 1752
- Visiting historical antiques that were gifted to previous kings and queens of England



JUN

STONEHENGE SUMMER SOLSTICE

Friday • June 21

Ages 10+ | All £55

Exertion level: MODERATE

Featuring:

- A hike through the mythical hills of Salisbury
- A trip through time to the ancient civilizations of Britain
- Sunrise through the pillars of Stonehenge

Keep an eye out for a new hike every month led by your very own ODR team!

Together, we will explore forests and mountains, travel back in time to prehistoric Britain, and experience the wildlife and culture of this beautiful island.



Each trip includes transportation & guided hike

KING'S WOODS TRAIL

Saturday • July 13

Ages 10+ | All £43

Exertion level: MODERATE

Featuring:

- A hike through the wildlife-infused reserve where kings used to hunt
- Viewings of art and sculptures around the forest created by artists who have a passion for the forest

JUL

HEREFORDSHIRE BEACON

Saturday • August 17

Ages 10+ | All £70

Exertion level: HIGH

Featuring:

- A hike through the natural wonders of the Malvern Hills
- Views of the Herefordshire scenery from the 2nd highest hill in the Malvern Hills

AUG

ONE TREE HILL

Saturday • September 21

Ages 10+ | All £39

Exertion Level: LOW

Featuring:

- A hike to the summit of One Tree Hill - a large, tranquil site with spectacular views over the Weald of Kent
- Exploration of the home of one of Britain's most endangered mammals - the muscardinus avellanarius or dormouse

SEP

DAY *trips*



HORSEBACK TREK

Sunday • May 12 (Mother's Day)

Ages 10+ | All £95

Exertion Level: MODERATE

Includes: transportation and a horseback trek experience

There's no better way to explore the English countryside than on horseback! Treat your loved one to a day out this Mother's Day!

Must sign up three weeks prior to the event. Participants must be under the weight limit of 182 lbs/13 stone to participate.



CAVING

Saturday • September 28

Ages 10+ | All £115

Exertion Level: HIGH

Includes: transportation and caving experience

Escape the heat this summer by exploring the many twists and turns of England's wondrous caves. These guided experiences are great for new adventurers and experienced cave-goers alike.





SEVEN SISTERS HIKE

Saturday • May 4

Ages 10+ | All £55

Exertion Level: HIGH

Includes: transportation and a guided hike

The best walk in the Southeast! The Seven Sisters are a series of chalk cliffs, and this hike takes you on a journey through a field of wildflowers and across rolling hills, bringing you to incredible views of the Seven Sisters cliffside.



E-BIKE VINEYARD TOUR

Saturdays • June 1 & September 7

All £92

Exertion Level: MODERATE

Includes: transportation, E-bike hire, and wine tasting

Wine and E-biking... could it get any better? What if we told you the bikes basically pedal themselves? Enjoy an easy ride through the beautiful villages of Kent with an award-winning vineyard tour to follow.



THE LONG MYND IN SHROPSHIRE HIKE

Saturday • July 27

Ages 10+ | All £70

Exertion Level: MODERATE

Includes: transportation and a guided hike

Venture through the Long Mynd trails to visit the picturesque Lightspout Waterfall. Then, take refuge from the heat in the luscious valley, filled with waterways and trails that are perfect for pictures to capture memories that will last a lifetime.



Rentals & Shuttles



Party gear

Everything you need to host the party of the year - from canopies to grills, and catering items like popcorn and cotton candy machines - we've got it all!

Holiday essentials

- Tables & chairs
- Turkey fryers
- Chafing dishes

Household items

- Carpet cleaners
- Vacuum cleaners

Gardening & DIY

- Lawn mowers
- Shovels & rakes
- Power/hand tools

Fun stuff

- Inflatable bouncy castles
- Dunk tank
- Sumo suits
- Yard games

Check out our website to view our rental catalogue, trips, and more!



AIRPORT SHUTTLE

Based on transportation from RAFL; prices starting at:

Heathrow or Gatwick: \$300

Luton: \$190

Stansted: \$150

Visit our website to submit a booking request!



STORAGE UNITS

Small units - 8x8x10

\$55 per month

Large units - 10x10x20

\$75 per month

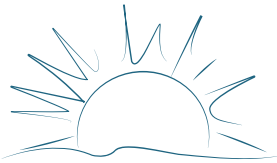
RAGE ROOM: NORWICH

Saturdays • April 6 & June 29
Ages 10+ | All £52

Exertion Level: HIGH

Includes: transportation and a "SMASHING" experience

It's a "SMASHING" new idea to unleash your inner rage! De-stress while breaking your way through old crockery, printers, laptops, TVs, and furniture.



CLIMB THE O2

Sunday • August 11
Ages 10+ | All £90

Exertion Level: HIGH

Includes: transportation and a climb across the O2

Ready for an adventure? Climb across the top of the O2 Arena in a 90-minute experience while embracing the gorgeous, panoramic views of the city of London.



GO APE

Sundays • April 28 & September 15
Ages 10+ | All £65

Exertion Level: MODERATE

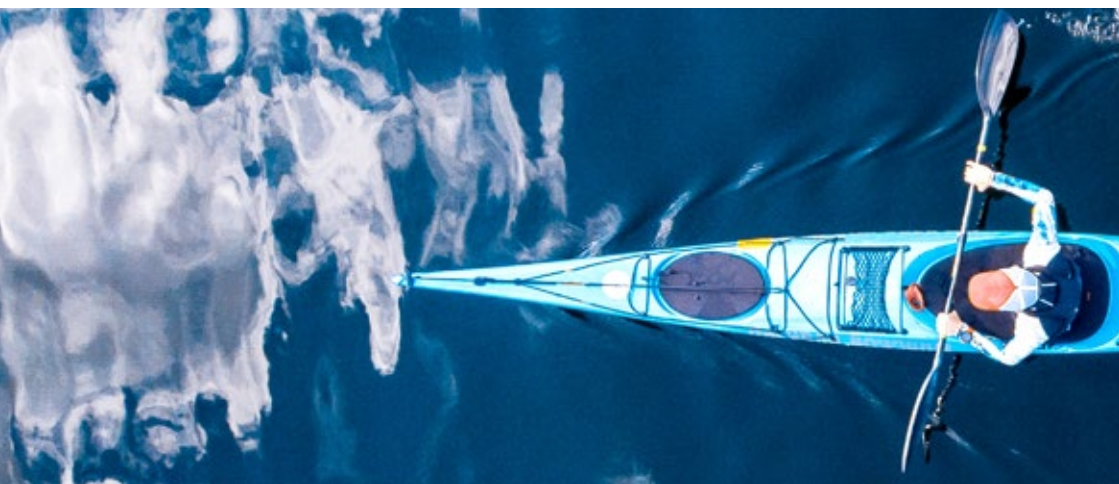
Includes: transportation and a treetop challenge experience

Transcend your comfort zone, channel your inner adventurer, and get ready to venture high into the treetops. Don't forget to buddy-up to see who screams the loudest on the Tandem Zip Wire and Dual Tarzan Swings!



SPLISH

splash



NORTH SEA FISHING

Sunday • June 16 (*Father's Day*)

Ages 10+ | All £150

Exertion Level: LOW

Includes: transportation, complimentary warm beverage, and private group fishing charter with rod and reels

Venture out into the tranquil North Sea and enjoy some of the best fishing in the world. Cast out your line for cod, skate, and bass - whatever you catch, you keep.

Sign-up closes two weeks prior to trip.

KAYAKING

Saturday • June 8

Ages 10+ | All £70

Exertion Level: MODERATE

Includes: transportation and a kayak experience

Kayak through creeks and get lost in a wilderness like no other with stunning views and incredible wildlife. Whether you're a seasoned kayaker or a beginner, this tour is designed to cater to all levels of familiarity and provide a unique and unforgettable experience.

18+
ADULTS
only

PADDLE & PUB

Saturday • August 3

All £51

Exertion Level: MODERATE

Includes: transportation and canoe gear rental

Fancy an afternoon paddle? Take to your canoes and paddle along the historic town of Sudbury, stopping for a pint at a local pub along the way! Free time will be given to enjoy lunch and a beverage.

OVERNIGHT *Excursions*



3-
Day

SURFING in Cornwall

July 4 - 6 (*Independence Day Weekend*)

Ages 10+ | £450 per person

Exertion level: HIGH

Includes: transportation, two nights bed and breakfast accommodation, surfing lessons, and free time to explore Cornwall

Layaway option available with a non-refundable, non-exchangeable deposit of £200 per person upon booking • Full payment is due by Thursday, May 23 • Travel insurance is highly recommended

3-
Day

HIKING

in Snowdonia

October 11 - 13 (Columbus Day Weekend)

Ages 10+ | £445 per person

Exertion level: HIGH

Includes: transportation, two nights bed and breakfast accommodation, and a guided tour to the summit of Snowdon

Single supplement £120 • Layaway option available with a non-refundable, non-exchangeable deposit of £170 per person upon booking • Full payment is due by Friday, August 30 • Travel insurance is highly recommended



PARTY *time!*



INFLATABLE PARTY

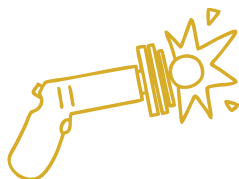
Wednesday • July 31

All \$10

Includes: 2-hour inflatable party session

Jump into summer break with an afternoon in the sun* full of all your favorite inflatables - bouncy castles, slides, games, and plenty more for all to enjoy!

**Weather permitting*



LASER TAG

Wednesday • August 7

All \$12

Includes: 45-minute laser tag session

This season, we are taking laser tag outdoors!* Our themed laser tag parties are great for all ages and a welcome way to enjoy the sunshine with friends and family.

**Weather permitting*



ARCHERY & AXE THROWING

Wednesdays • April 24 & July 24

Ages 8+ | All \$20

Includes: axe throwing and archery session

We're bringing the experience to you! Where? Freedom Field,* RAF Lakenheath. Get ready for a day full of action-packed fun!

**Weather permitting*



Paid ad. No Federal endorsement of advertiser intended.

Car insurance... are you getting the best deal?

With us, it can be as low as
£57 a month!



Car Insurance for **RAF Lakenheath**

Average premium calculated based upon new UK policies sold in 2022. Individual quotations may vary and fees may apply.



In partnership with
GEICO
Financial Services GmbH

Clements.com/Lakenheath
☎ +44 (0) 330 0990100



*Travel more...
worry less!*

AIR FORCE



OUTDOOR RECREATION



WITH FORCE SUPPORT SUBSECTION
**Information
Tickets
& Travel**



RAF LAKENHEATH
48 FSS

Scan here!

